

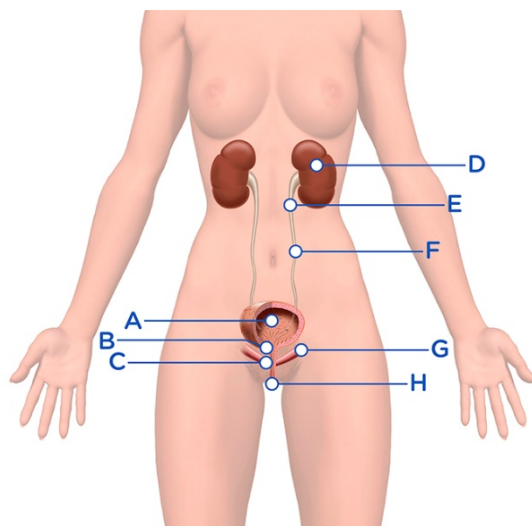


## LEARN

### URINARY SYSTEM - FEMALE ANATOMY AND PHYSIOLOGY

**The Urinary System is responsible for the eliminating of waste and extra fluid in the body, by making and excreting urine.**

It's important that all parts of the urinary system work in partnership for normal urination to occur. The urinary system consists of **kidneys, ureters, bladder,** and **urethra.**



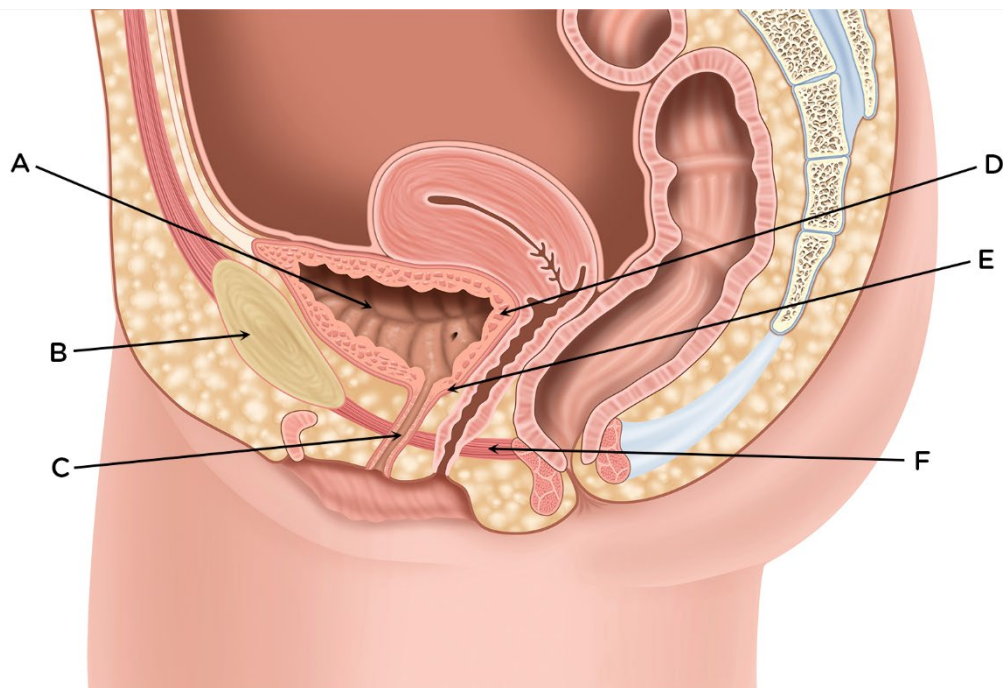
- A = Bladder
- B = Internal Sphincter
- C = External Sphincter
- D = Kidneys
- E = Renal Pelvis
- F = Ureter
- G = Pelvic Floor Muscles
- H = Urethra

The female anatomy consists of the urethra at 3-5 cm which starts at the bottom of the bladder or bladder neck and extends downwards through the pelvic floor muscle, with the urethral orifice or external opening being situated between the clitoris and the vagina. For passive continence it is important that the mucous membrane in the urethra is elastic and well supplied with blood, for which the

female hormone estrogen is responsible and consists of a mixture of smooth and striated muscles.

When the woman enters menopause, estrogen production decreases, which affects the mucous membranes in the genital area and the urethra to become more fragile, dry, and less elastic. Symptoms such as urine leakage, recurrent urinary tract infections and pain during intercourse are common.

## Female Anatomy



A = Bladder

B = Pelvic bone

C = Urethra

D = Detrusor muscle

E = External sphincter

F = Pelvic floor

At Wellspect we develop innovative continence care solutions that change people's lives. We are committed to inspire our users to build self-confidence and independence as well as good health and well-being. We have been leading the industry for over 30 years with our product brands LoFric® and Navina™. We create reliable and user-friendly products for bladder and bowel management with as little environmental impact as possible. We passionately strive to become climate neutral and work closely together with users and healthcare professionals who constantly inspire us to improve our products and services in a sustainable way, now and for the future.

Wellspect. A Real Difference.

For more information about our products and our initiative Advancing Continence Care Together (ACCT), please visit [Wellspect.com](https://www.wellspect.com).

Join the conversation on Facebook and Instagram.

[wellspect.com](https://www.wellspect.com)



Wellspect HealthCare, Aminogatan 1, P.O. Box 14, SE-431 21 Mölndal, Sweden. Phone: +46 31 376 40 00.