

LoFric - infants

LoFric® single use, hydrophilic urinary catheter.

For short and long term intermittent urinary catheterization.

LoFric catheters are for prescription use only.

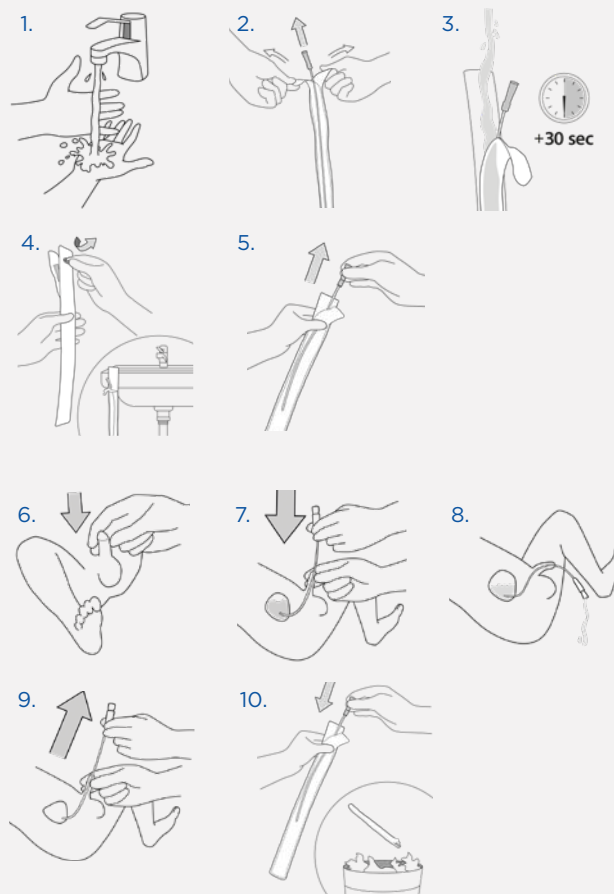
Ensure to follow the advice and training on the catheterization procedure given by your Healthcare Professional, before use.

Please refer to instructions for use included in the package, for important information and complete instructions.

Contact your prescriber if you experience difficulties.

Instructions for use

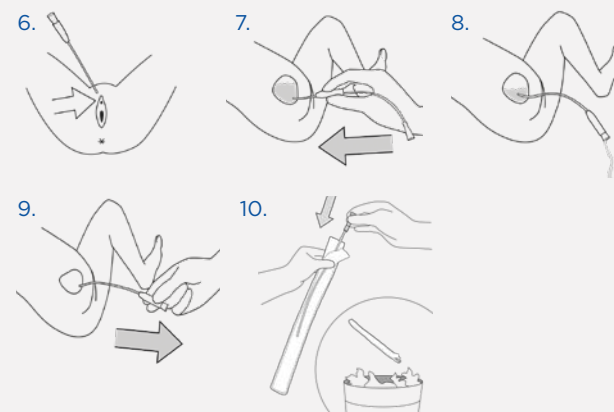
1. Wash your hands with soap and water before catheterization.
2. To open, peel the taps on the funnel side of the package.
3. Fill the package with clean water, at home from the tap and in hospital with sterile water or saline. Soak the catheter for at least 30 seconds before use.
4. Whilst preparing yourself for catheterization, remove the sticker and use the self-adhesive tape to attach the product to a dry surface.
5. Take out the catheter.



6. Lift his penis up towards his stomach. In this position, the urethra is extended and becomes U-shaped. This will make it easier to guide the catheter into the bladder.
7. Slowly insert the catheter into the urethra. When urine begins to flow, insert the catheter slightly more to ensure both eyelets are inside the bladder.
8. Point his penis and the funnel end of the catheter towards a container of any kind. When the urine flow stops, slowly withdraw the catheter a little bit. If urine starts to flow again, wait until it has stopped to ensure complete bladder emptying.
9. Hold the penis up towards his stomach again and withdraw the catheter slowly.
10. Put the catheter back in the package and dispose appropriately (local regulations may vary).



6. Spread the labia and locate the urethra just above the vaginal opening.
7. With your other hand, slowly insert the catheter into the urethra. When urine begins to flow, insert the catheter slightly more to ensure both eyelets are inside the bladder. You can now let go of the labia to free up your other hand.
8. Point the funnel end of the catheter towards a container of any kind. When the urine flow stops, slowly withdraw the catheter a little bit. If urine starts to flow again, wait until it has stopped to ensure complete bladder emptying.
9. Now, withdraw the catheter slowly.
10. Put the catheter back in the package and dispose appropriately (local regulations may vary).



At Wellspect we develop innovative continence care solutions that change people's lives. We are committed to inspire our users to build self-confidence and independence as well as good health and well-being. We have been leading the industry for over 30 years with our product brands LoFric® and Navina™. We create reliable and user-friendly products for bladder and bowel management with as little environmental impact as possible. We passionately strive to become climate neutral and work closely together with users and healthcare professionals who constantly inspire us to improve our products and services in a sustainable way, now and for the future.

Wellspect. A real difference.

For more information about our products and our initiative Advancing Continence Care Together (ACCT), please visit [Wellspect.com](https://www.wellspect.com).

Join the conversation on Facebook and Instagram.

[wellspect.com](https://www.wellspect.com)

